

# Nebraska Urology

## BPH Care Pathway

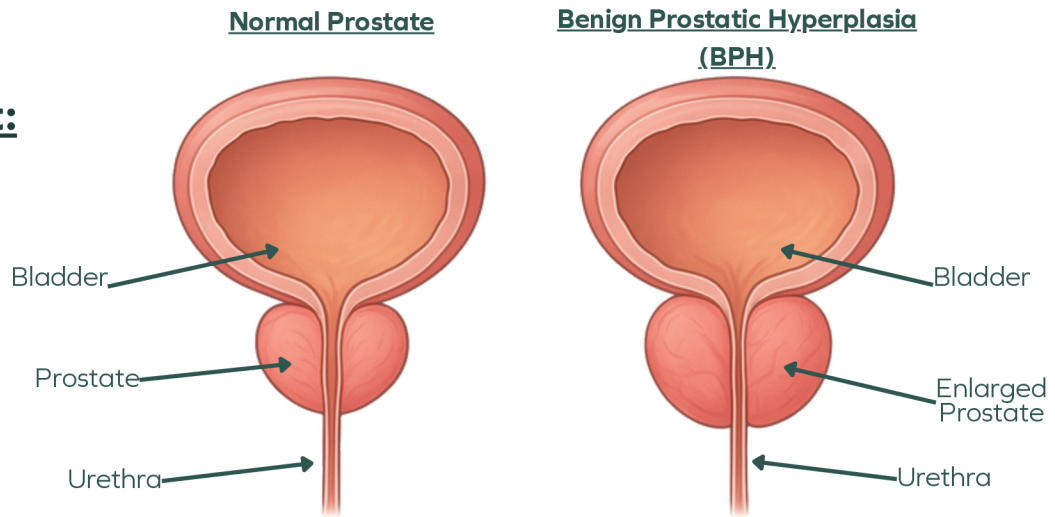
**IPSS:** \_\_\_\_\_

### **Medication Management:**

Flomax (Tamsulosin), Rapaflo,  
Hytrin (Terazosin), Proscar  
(Avodart), Cialis (Tadalafil),  
Cardura (Doxazosin).

### **Important to Note:**

If symptoms don't improve within  
4-6 weeks or side effects are  
bothersome, further evaluation  
may be necessary.



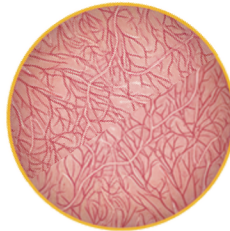
## Diagnostic Testing

### **Cystoscopy:**

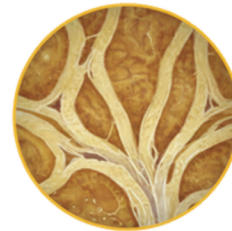
#### Optional:

UroCuff

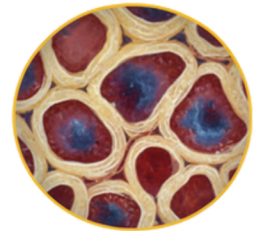
Prostate Sizing



Healthy  
Bladder



Bladder  
Worsens



Permanently  
Damaged

## Treatment Options

### **Minimally Invasive**

#### **UroLift™**

No Cutting, Quick Recovery, No  
Sexual Side Effects, No Tissue  
Destruction



### **Surgery**

#### **TURP**

- Removes tissue
- Catheter for 2-5 Days
- Risk of ED, Ejaculatory Dysfunction
- Longer Recovery

#### **Prostatectomy**

- Completely Removes Obstructive Tissue
- Ejaculatory Dysfunction
- Increased Pain
- Overnight Hospital Stay

Learn More About Your BPH at [BPHAdvisor.com](http://BPHAdvisor.com) or Scan Here

